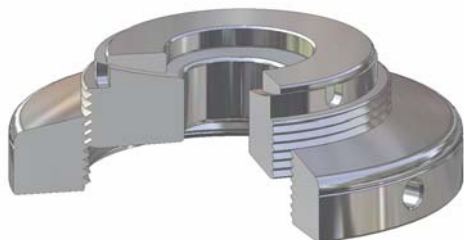
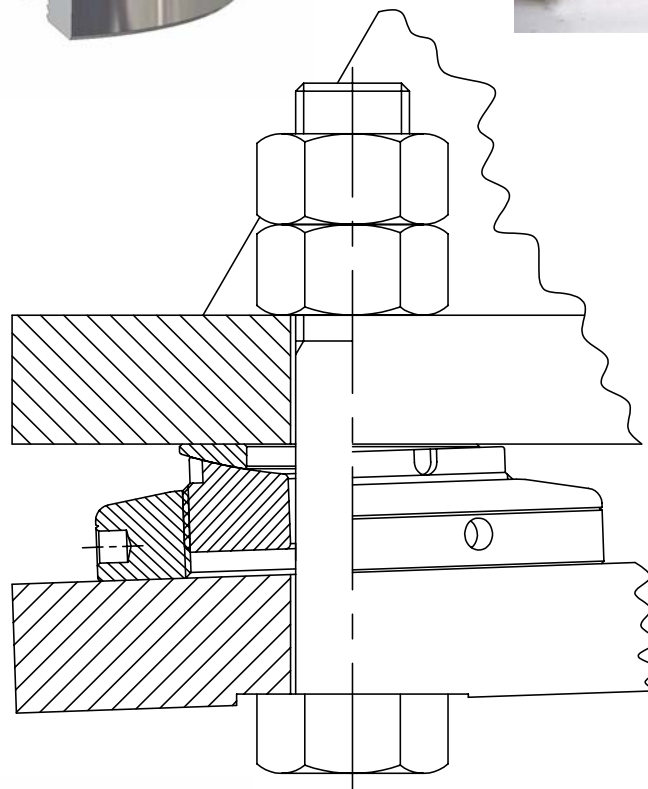
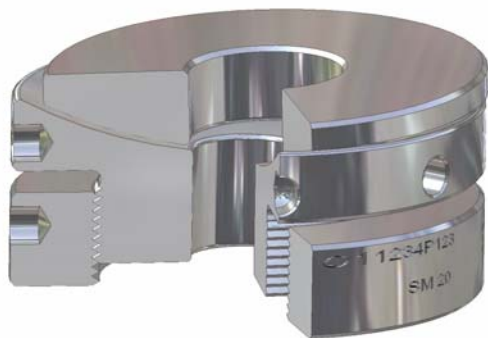


# Vibracon<sup>®</sup> manual



## Contents

	Version
Chapter 1 Vibracon® Brochure	9
Chapter 2 How to order Vibracon® chocks	2.1
Chapter 3 Vibracon® References and Approvals	2.3
Chapter 4 Vibracon® Installation Procedure	2
Chapter 5 Vibracon® Frequently Asked Questions	2
Chapter 6 Vibracon® Application Design Instructions	2.1
Chapter 7 Other products and services of the Machine Support Group	2

## **Introduction**

Vibracon® chocks are permanent, strong and re-usable machinery mounting chocks for all types of rotating or critically aligned machinery. Vibracon® chocks are mechanically stiff chocks that make accurate mounting simple and quick. The Vibracon® advantages are elimination of the trial and error alignment process characteristic for the “mill and shim” method and adjustability during the life cycle of the machinery.

The Vibracon® chock has many configurations and material options to satisfy technical concerns, in end user environments and production line costs. All Vibracon® chocks include the spherical top plate and mating middle section. This self leveling configuration accommodates the angular differences that are inherent with mounting surfaces. The height adjustment feature has the greatest range in the industry, which makes the Vibracon® chock easy to install.

Vibracon® chocks are the most economical means to establish a perfect mounting plane. The Vibracon® advantage is the capability to perfectly create the mounting plane within minutes and repeatedly for Production or Service Managers and Accountants.

In this manual we will inform you about all facts of the Vibracon®. If you have further questions or if you need additional information, please remember The Machine Support Group is a 24/7 organization. Please don't hesitate to contact one of our offices as mentioned below.

### **Machine Support B.V.**

Kaartenmakerstraat 7  
NL-2984 CB Ridderkerk  
The Netherlands  
Phone (+) 31 (0)180 483828  
Fax (+) 31 (0)180 483829  
e-mail info@machinesupport.com

### **Machine Support, Inc.**

109B 86th street  
Virginia Beach, VA 23451  
United States  
Phone (+) 1 877 621 1777  
(+) 1 757 417 7411  
Fax (+) 1 757 417 7412  
e-mail varmecky@machinesupport.com

### **Machine Support, Inc.**

2 Redland Place  
The Woodlands, TX 77382  
United States  
Phone (+) 1 281 298 5001  
Fax (+) 1 281 657 7597  
e-mail parsons@machinesupport.com

### **Machine Support, Inc.**

218 Venture Blvd.  
Houma, LA 70360  
United States  
Phone (+) 1 985 851 5100  
Fax (+) 1 985 851 0061  
e-mail morner@machinesupport.com

### **Machine Support U.A.E.**

P.O. Box 8807  
Dubai  
United Arab Emirates  
Phone (+) 971 (0) 433 92215  
Fax (+) 971 (0) 433 91952  
e-mail info@machinesupport.com

### **Machine Support Singapore**

16 Tuas Avenue 10  
Singapore 639140  
Singapore  
Phone (+) 65 6861 0484  
Fax (+) 65 6861 0191  
e-mail doodewaard@machinesupport.com